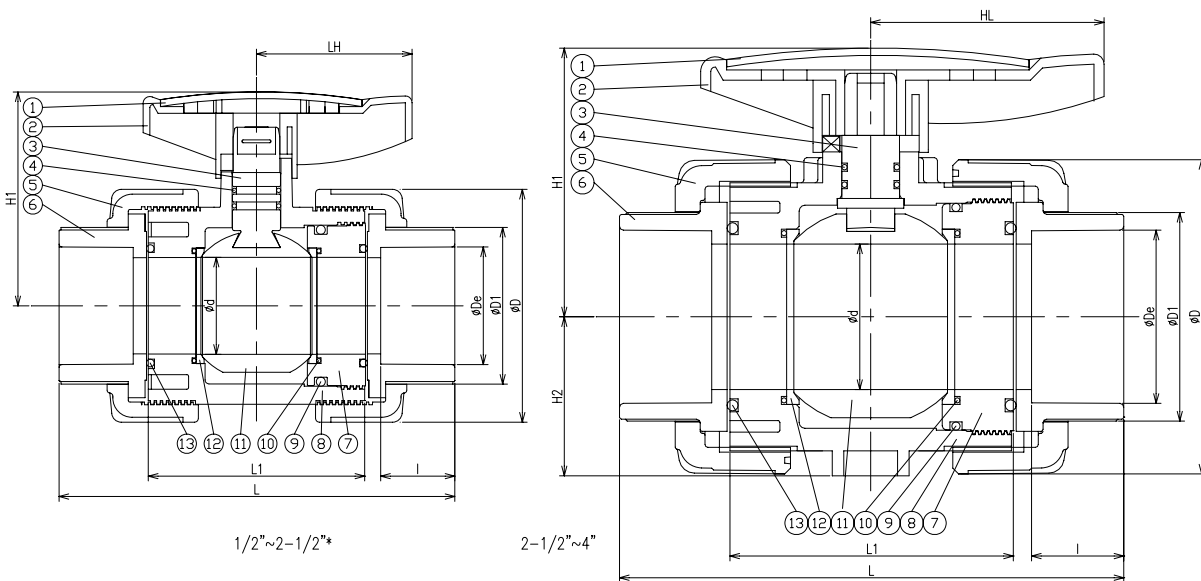


# SUPER TUNG

## TRUE UNION BALL VALVE



- Working pressure : 150 PSI/73°F
- Full port design
- Easy Maintenance
- Easy automated
- Teflon seat
- Double O-ring steam seals



NO	PART NAME	MATERIAL	Q'TY
1	HANDLE CAP	ABS	1
2	HANDLE	ABS	1
3	STEM	UPVC,CPVC	1
4	STEM O-RING	EPDM,FPM	2
5	UNION NUT	UPVC,CPVC	2
6	END CONNECTOR	UPVC,CPVC	2
7	SEAL CARRIER	UPVC,CPVC	1
8	BODY	UPVC,CPVC	1
9	CARRIER O-RING	EPDM,FPM	1
10	SEAT O-RING	EPDM,FPM	2
11	BALL	UPVC,CPVC	1
12	SEAT SEAL	PTFE	2
13	UNION O-RING	EPDM,FPM	2

Size		15 mm (1/2")	20 mm (3/4")	25 mm (1")	32 mm (1 1/4")	40 mm (1 1/2")	50 mm (2")	65 mm* (2-1/2")	65 mm* (2-1/2")	80 mm (3")	100 mm (4")
JIS	De	22	26	32	38	48	60	76	76	89	114
	I	22.6	25.5	28.6	31.9	35.1	38.2	41.4	45	51	61
ANSI	De	21.34	26.67	33.40	42.16	48.26	60.32	73.02	73.02	88.9	114.3
	I	22.6	25.5	28.6	31.9	35.1	38.20	41.4	45	48	57.5
DIN	De	20	25	32	40	50	63	75	75	90	110
	I	17	19.5	23	27	32	37.5	41.5	45	51	61
CNS	De	22	26	34	42	48	60	76	76	89	114
	I	22.6	25.5	28.6	31.9	35.1	38.2	41.4	45	51	61
NPT(thd./in)		14	14	11.5	11.5	11.5	11.5	11.5	8	8	8
BSPT(thd./in)		14	14	11	11	11	11	11	11	11	11
D		46	56	66.5	82	98	120	120	162	162	220
D1		32	38	45	55	67	81	89	92	107.5	134
d		13	19	25	31	40	50	50	75	75	100
L		116	133	150	169	174	206	212	252	260	310
L1		62	72.5	80	87	94.5	113	113	147	147	176
LH		45	52	58	66	69	81	81	118	118	140
H1		49	60	69	76	91	110	110	140	140	185
H2		-	-	-	-	-	-	-	82	82	111

\*:Decrement Type-inside diameter 50

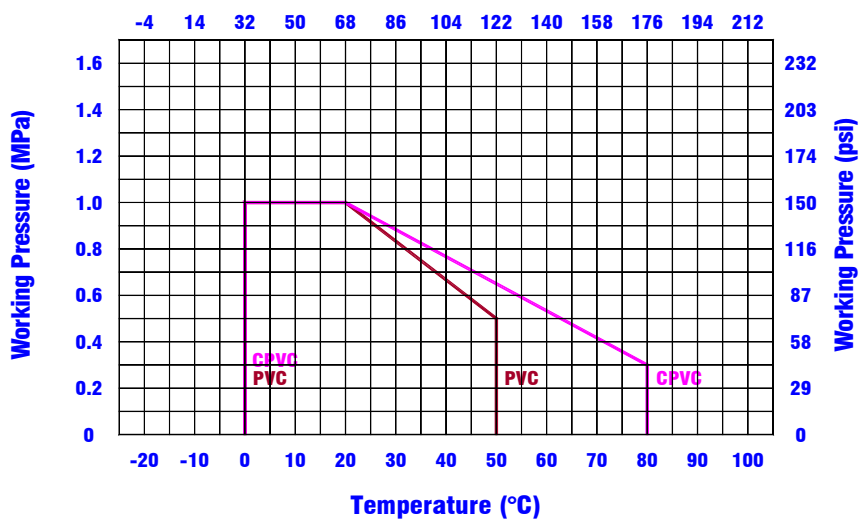
## Technical Information

Item	Description	Size	Material		
			Body	O-ring	Seat
(1)	True Union Ball Valve	1/2"(DN15)	PVC,CPVC	EPDM , FPM	PTFE
(2)	True Union Ball Valve	3/4"(DN20)	PVC,CPVC	EPDM , FPM	PTFE
(3)	True Union Ball Valve	1"(DN25)	PVC,CPVC	EPDM , FPM	PTFE
(4)	True Union Ball Valve	1-1/4"(DN32)	PVC,CPVC	EPDM , FPM	PTFE
(5)	True Union Ball Valve	1-1/2"(DN40)	PVC,CPVC	EPDM , FPM	PTFE
(6)	True Union Ball Valve	2"(DN50)	PVC,CPVC	EPDM , FPM	PTFE
(7)	True Union Ball Valve	2-1/2"(DN65)*	PVC,CPVC	EPDM , FPM	PTFE
(8)	True Union Ball Valve	2-1/2"(DN65)	PVC,CPVC	EPDM , FPM	PTFE
(9)	True Union Ball Valve	3"(DN80)	PVC,CPVC	EPDM , FPM	PTFE
(10)	True Union Ball Valve	4"(DN100)	PVC,CPVC	EPDM , FPM	PTFE

\*:Decrement type:inside diameter 50mm

Size	Hydrostatic Testing		Seat and O-ring Tests		Torque kg*cm	Cv
	Burst pressure water(kg/cm <sup>2</sup> ) min	Long-term behaviour test water(kg/cm <sup>2</sup> )	Seat valve close air kg/cm <sup>2</sup>	O-ring valve open air kg/cm <sup>2</sup>		
1/2"(DN15)	42	22	6	6	25	8
3/4"(DN20)	42	22	6	6	25	15
1"(DN25)	42	22	6	6	30	29
1-1/4"(DN32)	42	22	6	6	60	75
1-1/2"(DN40)	42	22	6	6	70	90
2"(DN50)	42	22	6	6	90	140
2-1/2"(DN65)*	42	22	6	6	90	140
2-1/2"(DN65)	31	22	6	6	150	330
3"(DN80)	31	22	6	6	150	480
4"(DN100)	31	22	6	6	250	600

Temperature (°F)



Pressure Loss  
Calculation Formula

$$\Delta P = (Q/Cv)^2$$

$\Delta P$ : Pressure Drop  
Q : Flow in GPM  
Cv : Flow Coefficient